



# axiom 660

Integrated, high power CW laser



A Novanta Company

- Continuous wave 660 nm laser
- Market-leading power up to 6 W
- Integrated diode-in-head
- Extremely compact power supply unit



## Overview

The **axiom 660** laser is a new architecture that delivers high CW power whilst incorporating all of the active optics within the laser head. This design lends itself to easy integration into equipment, without the complexities associated with fibre delivery of the pump light. The **axiom** is a high power red laser providing a market-leading output of 6 W at 660 nm with excellent noise and stability. Along with its ultra-compact power supply unit, it forms a small-scale laser system ideal for Raman imaging, particle image velocity (PIV) and fluorescence imaging. The **axiom** design features our innovative stress-free cavity architecture. It has excellent beam characteristics and a power stability of <1.0% RMS.

## Applications

The **axiom 660** is suitable for a range of applications, particularly PIV, Raman imaging and a wide range of fluorescence imaging techniques. PIV is an optical technique used to visualise flow and direction of a fluid. The high power intensity, and the ability to shape the beam, enables a 2-dimensional light sheet to be created and form a canvas of the image. Therefore, a high powered 660 nm laser, such as the **axiom** with power up to 6 W, will enable visualisation of a larger flow cross-section or a brighter image. Also, the excellent beam pointing stability of the **axiom** minimises any corruption of velocity tracking within the light sheet.

The **axiom** can also be used for Raman imaging, generating detailed chemical images (see figure 1) based on a sample's Raman spectrum. The wavelength of 660 nm is commonly used for Raman spectroscopy and the high power allows imaging of Raman emission over a large area, not possible with lower powers. With its high power, excellent beam characteristics and size, the **axiom 660** addresses several fluorescent dyes including Atto 647N and Atto 655 for fluorescence imaging and super resolution microscopy.

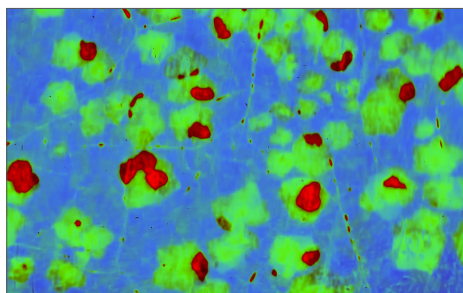


Figure 1. Hyperspectral Raman image of monolayer graphene with bilayer islands produced by chemical vapour deposition on copper substrate. Data obtained with Photon etc's RIMA system Courtesy of Prof. Richard Martel, Department of Chemistry, University of Montreal.



The **axiom** laser range features an intelligent control unit that allows easy setting and monitoring of the laser parameters. Incorporating PowerLoQ™ technology, the **axiom** lasers show extreme power stability over long periods of use.



The **axiom** can be controlled across the internet via our RemoteApp™ software that also allows connection to the Laser Quantum support team for monitoring laser performance, diagnosing opportunities for and carrying out laser optimisation.



# axiom 660

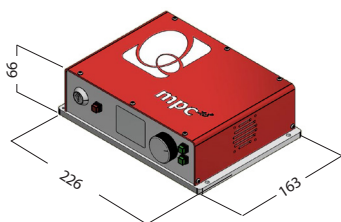
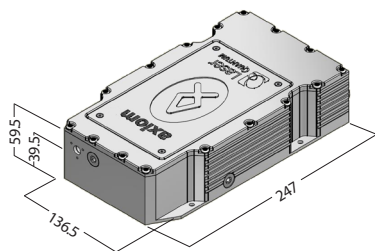
Integrated diode pump in head laser



Laser  
QUANTUM

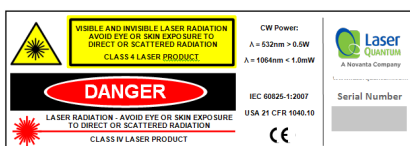
A Novanta Company

## Dimensions (mm)



## Other information

- Umbilical length: 1.5 m
- Laser head weight: 3.96 kg
- LabView drivers available
- Cooled via internal water channels



Drawings are for illustrative purposes only. Please contact Laser Quantum for complete engineer's drawings.

## Specifications\*

	axiom 660
Wavelength	660 nm
Power	3 W to 6 W
Spectral bandwidth	60 GHz
Beam diameter <sup>1</sup>	0.85 mm ± 0.2 mm
Spatial Mode	TEM00
Ellipticity	<1:1.15
Bandwidth	60 GHz
Divergence	<1.6 mrad
M <sup>2</sup>	<1.2
Power stability (RMS) <sup>2</sup>	<1.0%
Noise (RMS)	<1.0%
Noise bandwidth	10 Hz to 50 kHz
Pointing stability	<10 urad/°C
Polarisation ratio	>100:1
Polarisation direction	horizontal
Coherence length	~5 mm
Beam angle	<1 mrad
Umbilical length	1.5 m
Laser class	Class IV
Operating temperature	20 to 29 °C
Weight	3.96 kg
Warm-up time	<10 minutes

\* Laser Quantum operates a continuous improvement programme which can result in specifications being improved without notice.

<sup>1</sup> Beam diameter defined as the average of major and minor 1/e<sup>2</sup> beam size measured at 25 cm from exit port, at specified power.

<sup>2</sup> Test duration >100 hrs at constant temperature.

### LASER QUANTUM LTD

tel: +44 (0) 161 975 5300  
 email: info@laserquantum.com  
 web: www.laserquantum.com

### LASER QUANTUM INC

tel: +1 510 210 3034  
 email: info@laserquantum.com  
 web: www.laserquantum.com

### LASER QUANTUM GmbH

tel: +49 7531 368371  
 email: info@laserquantum.com  
 web: www.laserquantum.com